



Partridge Way, Wood Green, N22

Guide Price £575,000



3



1



1



D

Partridge Way, Wood Green, N22



Description

****CLOSE TO STATIONS**** Homelink are pleased to offer for sale this EX-LOCAL terraced three bedroom house with generous sized rooms throughout.

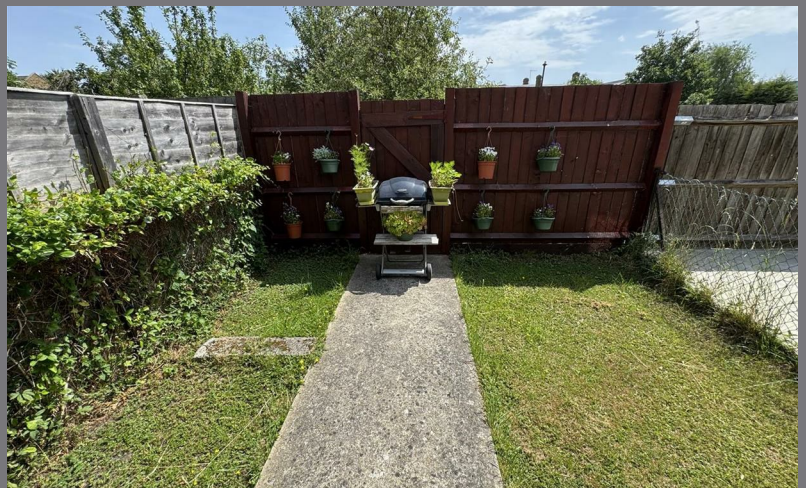
The property offers an opportunity to buyers looking to move from a flat to a house with a garden and is close to good local schools. The house is well presented throughout and benefits from a kitchen/breakfast room, separate reception room, ground floor WC and first floor bathroom.

Located close to the many shops, restaurants and transport links of both Wood Green and Bounds Green as well as Mainline station stations of both Alexandra Palace & Bowes Park (direct to Moorgate).

Don't miss out, call now to arrange your viewing.

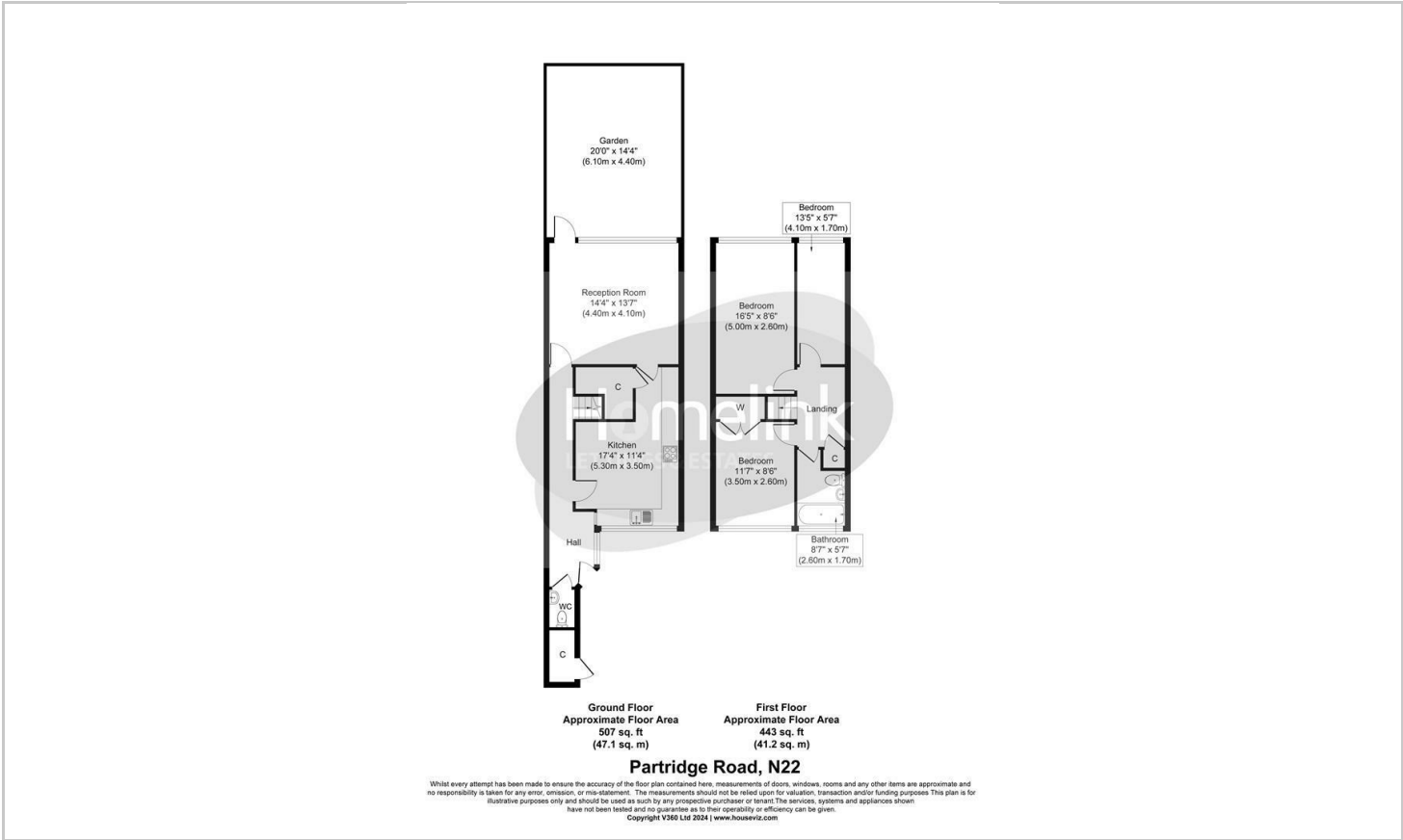
Tenure: FREEHOLD
Haringey C/Tax Band - D

- GREAT FAMILY HOME
- THREE BEDROOM TERRACE
- SPACIOUS LOUNGE
- EAT-IN KITCHEN/DINER
- FIRST FLOOR BATHROOM
- CLOSE TO TRANSPORT
- CHAIN FREE
- FREEHOLD

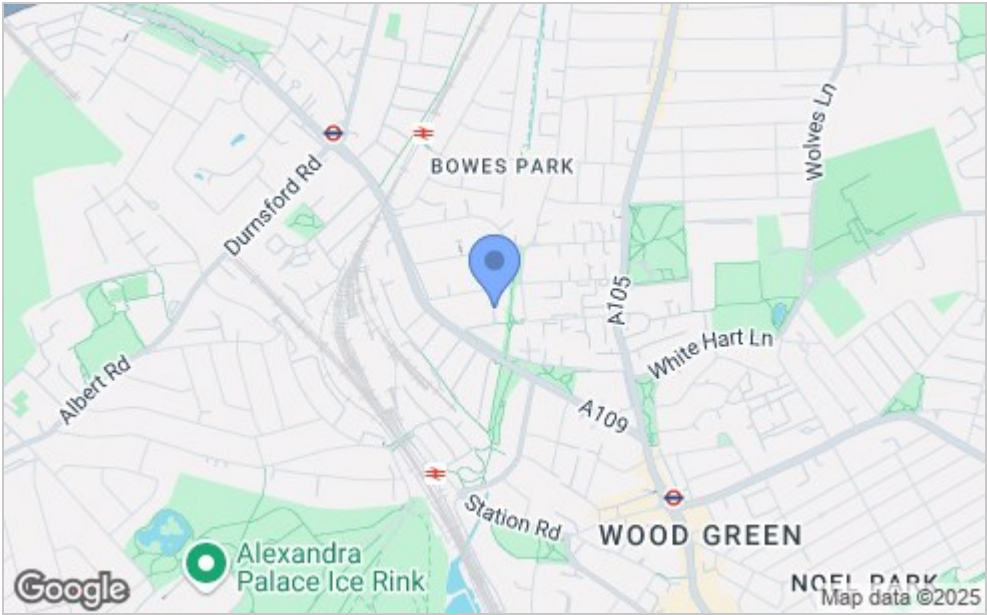




Floor Plan



Area Map



Viewing

Please contact our Homelink Lettings & Estates Office on 0208 882 2112 if you wish to arrange a viewing appointment for this property or require further information.

These particulars, whilst believed to be accurate are set out as a general outline only for guidance and do not constitute any part of an offer or contract. Intending purchasers should not rely on them as statements of representation of fact, but must satisfy themselves by inspection or otherwise as to their accuracy. No person in this firms employment has the authority to make or give any representation or warranty in respect of the property.

Energy Efficiency Graph

